

Reasons to cool your body-temperature?

- “ To improve your physical efficiency.
- “ To influence the communication velocity of your nervous system.
- “ Body-control.
- “ If perspiring is not sufficient.

Samples for applications:

- “ to get a positive influence by cooling
- “ Sports and leisure-time
- “ Safety-measurements, fire-brigade, military

Advantages:

You are able to wear our cooling-system beneath your ordinary (evaporative) clothes. The textile coolpad are ultra-thin and flexible. You will experience a gentle permanent cooling which lowers the body-temperature by approx. 4° C . The cooling garments do have a slight thermostat insulation and may be used permanent or punctual.

The production is in Switzerland.

Patent by UNICO swiss tex GmbH.



Personal Cooling System



Personal Cooling System (PCS):
medical device class 1 for multiple
sclerosis patients to improve the
physical efficiency.



UNICO swiss tex GmbH
Chälengasse 4
6053 Alpnachstad
Tel: +41 (0)41 671 00 71
Fax: +41 (0)41 671 00 70
www.unico-swiss-tex.ch
E-mail: info@unico-swiss-tex.ch

History

There was - like with many other innovation - a coincidence responsible for the discovery. A doctor who suffered herself of multiple sclerosis discovered the agreeable effect of the cooling of evaporating water. She was astonished that . after she got caught by an unexpected cloudburst . the wet clothes helped her to endur walking without getting tired. The reason is simple: While the garments were drying the evaporating water lead to a local lowering of the skin temperature . thus resulting that nerve cells could transport impulses faster and therefore gross- and fine motor performance improved..

Hightech-Textiles with cooling-effects

Could the same effect of the cloudburst also be achieved? Could you get the effect with high-tech textiles? Cooling-systems were already known in the space research and also in military fields. But those garments could not be worn in ordinary life as all of them narrow the patients' freedom of action.



To develop a solution for ordinary life, the research and development unity of the Empa searched in the textile industry. The result is an innovative garment based on a very thin textile-based 3-layer laminate of two waterproof, but water vapour-permeable polyester membranes which coat a hydrophilic fabric acting as water reservoir. By addition of a small quantity of water, the hydrophilic fabric is moistened and the evaporation of water through the outer polyester membrane leads to a local lowering of the skin temperature (4 to 5 degrees Celsius over a period of up to 40 minutes).

Once the water evaporates, it can be re-filled as often as needed without any loss.

That cooling of the body-temperature can have an agreeable impact is not new. But new is that cooling garments exist with the same effect of evaporation.



Our cooling-garments do not have any healing-power. But many patients may be supported with our development in their daily life and therefore we may reactivate joy for life.

Price-list 2008

Cooling-pants f/m

| | |
|-----------------|----------------------|
| Size XXS, XS, S | CHF 413.. (" 258.--) |
| Size M, L | CHF 425.. (" 265.--) |
| Size XL, XXL | CHF 438.. (" 273.--) |

Cooling-shirts f/m

| | |
|-----------------|-----------------------|
| Size XXS, XS, S | CHF 420.. (" 262.--) |
| Size M, L | CHF 432.. (" 270.--) |
| Size XL, XXL | CHF 445.-- (" 278.--) |

The injection needed for filling of the coolpad is included.

Washing instructions

- ❖ Our garments are machine washable up to 30° C. Please follow the instructions within the garment (gentle cycle only)
- ❖ Do not use **softeners**
- ❖ Use a washing net bag
- ❖ Do not use an iron and do not tumble dry.

Handling:

The coolpad have to be filled with water by an injection. The colour of the coolpad get darker when filled and can therefore be observed. Be careful that not too much water is filled in. Too much water could damage the coolpad. Once the water is evaporated, the coolpad can be re-filled.

Delivery within Switzerland:

Delivery charges vary depending on the type of products and are additional

Delivery outside Switzerland:

All our prices are excl. VAT and packing/delivery cost and are due to an surcharge.

advance payment required

Shipment:

The delivery takes normally two weeks. If the products are not on stock, you would be informed immediately. In such a case it is up to you to decide whether you want to wait or to cancel the order.

Substitution:

We reserve the right for technical changes which lead to improvements of the garment without notice.

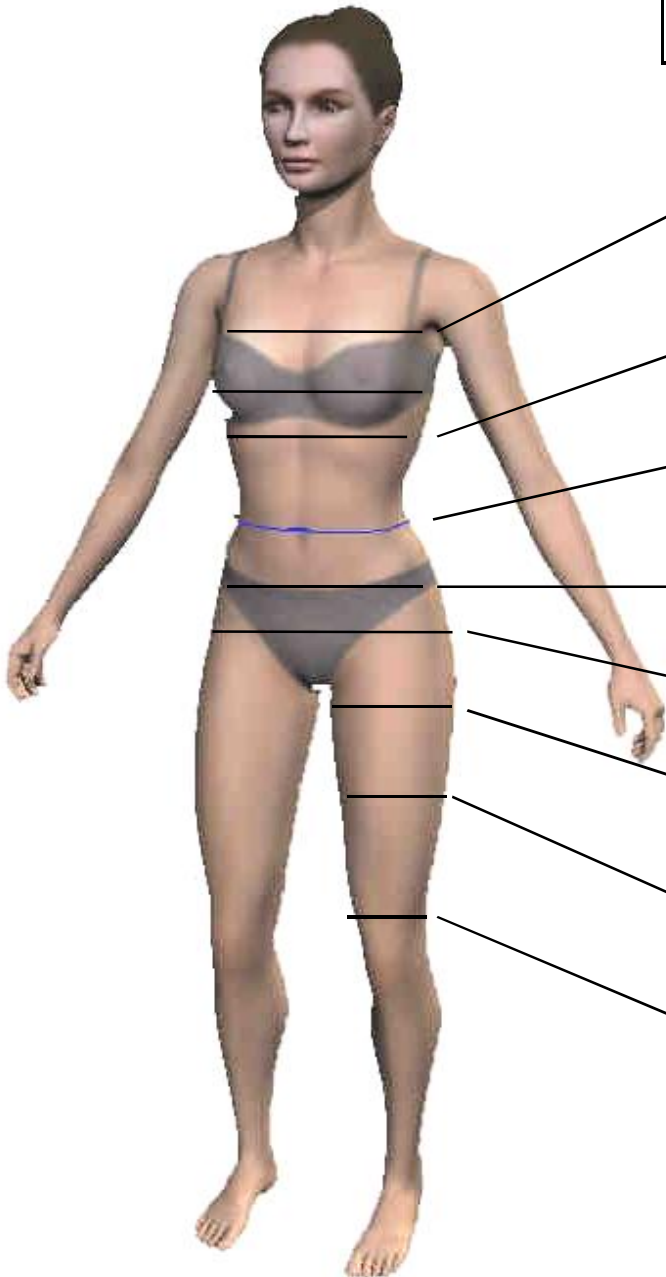
Cancellation right:

If our products are made to order they can therefore not be taken back.

If they are produced after our mass table, we take them back within 8 days.

Cooling-pants for women

Please fill in measurement 4 - 9



Name:.....
Address:.....
Zip-Code / city:.....
My Height is.....
Cloth-size.....:

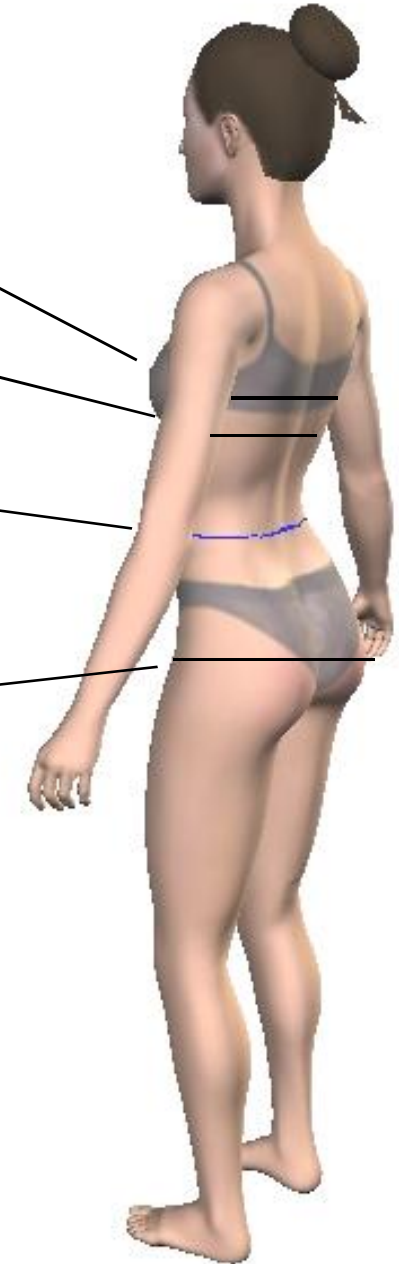
- 1. Chest I: measure your chest circumference above the breast
- 2. Chest II: measure your chest circumference at the widest part on your body
- 3. Chest III: measure your chest directly beneath the breast
- 4. Waist: measure your waist at the narrowest part
- 5. Abdomen: measure your circumference at 10cm beneath the waist
- 6. Hip: measure your hips circumference at 20 - 30cm beneath the waist
- 7. Thigh: measure your circumference on top
- 8. Thigh measure your circumference in the middle
- 9. Knee: measure the circumference just above the knee

Date

Signature::

Cooling-Shirt for women

Please fill in measurements 1 . 6

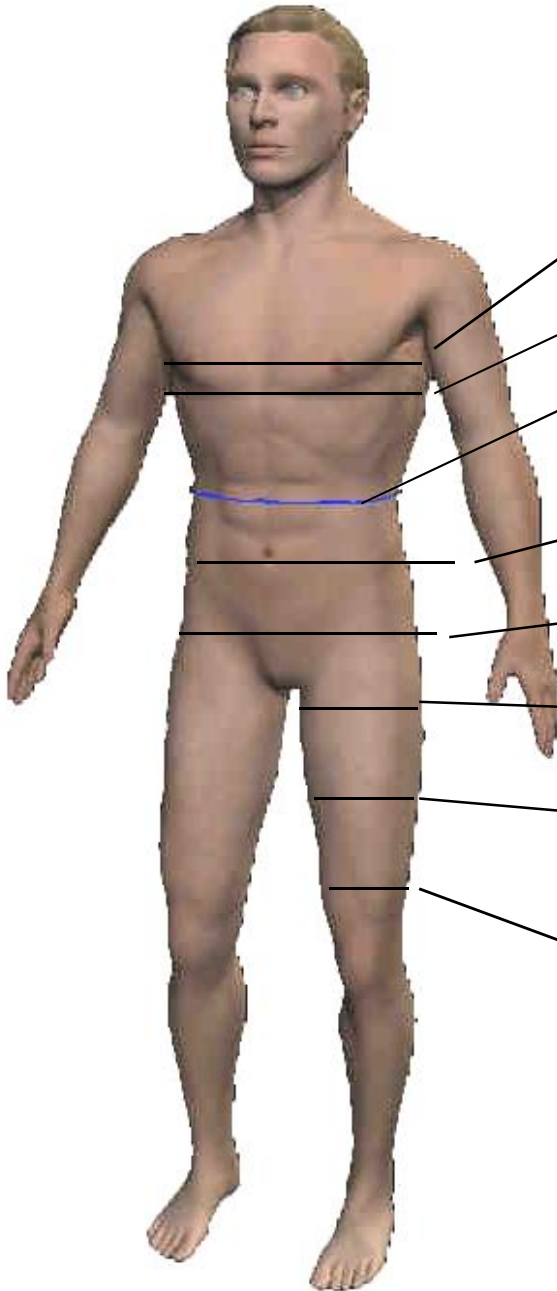


Date

Signature::

Cooling-pants for men

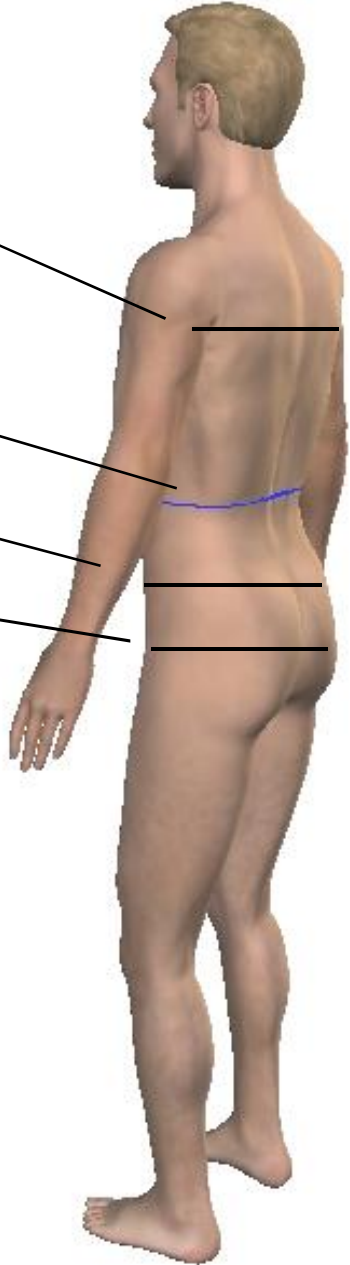
Please fill in measurements 3 -8



Name:.....
 Address:.....
 Zip-Code / city:.....
 My Height is.....
 Cloth-size.....:

Cooling-shirts for men

Please fill in measurements 1 . 5



1. Chest: measure your chest circumference at widest part on your body

2. Chest: measure your circumference beneath the breast

3. Waist: measure your waist at the narrowest part

4. Abdomen: 10 cm beneath the waist

5. Hip: 20-30 cm beneath the waist

6. Thigh: measure your circumference on top

7. Thigh: measure your circumference in the middle

8. Knee: measure the circumference just above the knee

Date: _____

Signature: _____

| Measurements pants: unisex | | | | | | | | | | |
|-----------------------------------|-----|--|---------|---------|---------|----------|-----------|-----------|-----------|-----------|
| Measurements | | Sizes | 11 | 12 | 13 | 14 | 15 | 16 | 17 | 18 |
| Women | Men | | | | | | | | | |
| 4 | 3 | Waist: at the narrowest point | 65 - 70 | 69 - 74 | 73 - 79 | 77 - 83 | 83 - 87 | 87 - 91 | 89 - 95 | 95 - 99 |
| 5 | 4 | Abdomen: 10cm beneath the waist | 73 - 76 | 76 - 80 | 80 - 85 | 85 - 90 | 90 - 94 | 94 - 97 | 97 - 101 | 101 - 105 |
| 6 | 5 | Hip: 20-23cm beneath the waist | 89 - 92 | 91 - 94 | 94 - 98 | 98 - 102 | 102 - 107 | 106 - 110 | 110 - 114 | 114 - 119 |
| 7 | 6 | Thigh: circumference on top | 46 - 48 | 48 - 50 | 50 - 54 | 54 - 58 | 58 - 62 | 58 - 62 | 60 - 64 | 61 - 65 |
| 8 | 7 | Thigh: circumference on the middle | 41 - 43 | 43 - 45 | 44 - 47 | 47 - 50 | 50 - 53 | 51 - 54 | 53 - 57 | 53 - 57 |
| 9 | 8 | Knee: circumference just above the knee | 35 - 37 | 36 - 38 | 37 - 39 | 39 - 41 | 41 - 44 | 41 - 44 | 42 - 45 | 42 - 45 |

| Measurements Cooling Shirt for Women | | | | | | | |
|---|--|---------|---------|----------|-----------|-----------|-----------|
| | | | | | | | |
| Measu rement | Sizes | XXS | XS | S | M | L | XL |
| 1 | Chest: above the breast | 79 - 83 | 83 - 87 | 87 - 91 | 91 - 95 | 95 - 99 | 99 - 104 |
| 2 | Chest: circumference at widest part | 83 - 87 | 87 - 91 | 91 - 95 | 95 - 99 | 99 - 103 | 103 - 107 |
| 3 | Chest: Circumference directly beneath the breast | 71 - 75 | 75 - 79 | 79 - 85 | 85 - 91 | 91 - 97 | 97 - 103 |
| 4 | Waist: at the narrowest part | 65 - 69 | 69 - 73 | 73 - 77 | 77 - 83 | 83 - 89 | 89 - 95 |
| 5 | Abdomen: 10cm beneath the waist | 73 - 77 | 77 - 81 | 81 - 85 | 85 - 91 | 91 - 97 | 97 - 103 |
| 6 | Hip: 20-30 cm beneath the waist | 89 - 93 | 93 - 97 | 97 - 101 | 101 - 107 | 107 - 113 | 113 - 119 |

| Measurements Cooling Shirt for Men | | | | | | | |
|---|---|---------|----------|-----------|-----------|-----------|-----------|
| | | | | | | | |
| | Sizes | XXS | XS | S | M | L | XL |
| 1 | Chest: circumference at widest part | 87 - 91 | 91 - 95 | 95 - 99 | 99 - 103 | 103 - 107 | 107 - 111 |
| 2 | Chest: circumference beneath the breast | 83 - 87 | 87 - 91 | 91 - 95 | 95 - 99 | 99 - 103 | 103 - 107 |
| 3 | Waist: at the narrowest part | 79 - 83 | 83 - 87 | 87 - 91 | 91 - 95 | 95 - 99 | 99 - 103 |
| 4 | Abdomen: 10cm beneath the waist | 85 - 89 | 89 - 93 | 93 - 97 | 97-101 | 101-105 | 105-109 |
| 5 | Hip: 20-30cm beneath the waist | 94 - 98 | 98 - 102 | 102 - 106 | 106 - 110 | 110 - 114 | 114 - 118 |